

LABORATORY CERTIFICATE



October 17, 2012

LABORATORY NUMBER: 5004.8056
CUSTOMER AUTHORIZATION: PO# 43759
DATE SUBMITTED: October 11, 2012
REPORT TO: Nemat Management Group
Attn: Grace Zeluff
19225 Road 24
Madera, CA 93638

SUBJECT:

Two TV mounts were submitted for load testing. The samples were identified as Large 36" and Small 24".

LOAD TEST

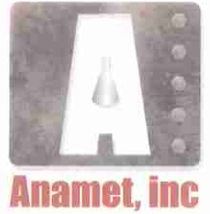
Two TV wall mounts, identified as small (24") and large (36"), were submitted to determine the maximum load each could achieve when an increasing load was applied to an aluminum mount, supplied by Nemat, which simulated an attached TV unit.

Each TV mount was attached to Anamet's test stand which was situated in a SATEC Universal test machine (calibrated to NIST on 5/7/2012.) The mounts were attached at 14" centers using 5/16-18 Gr. 5 screws. Next, the TV brackets were attached to the aluminum mount (simulated TV unit) using the supplied screws. To attach the small (24" brackets, holes had to be drilled and tapped on the side opposite those for the large 36" brackets. Finally, the TV mount was placed on the wall mount to be tested and centered between the attachment bolts on the test stand. Each unit was then leveled and the attachments bolts tightened. See Figures 1 through 4 for the test set-ups for each mount.

For the tests, each simulated TV (bracket) was loaded at the center at a load rate of 1/4" per minute. See Figures 5, 6 and 7 for tests in progress.

The final failure mode for the 24" wall mount was fracture of the screws holding the TV bracket to the simulated TV mount (See Figure 8). The first yield point occurred at 4664 lbs and the ultimate load obtained was 9979 lbs. The final failure mode for the 36" wall mount was bending in the two brackets which bent outward and one completely fractured (See Figure 9). The first yielding occurred at 2789 lbs and the ultimate load obtained was 9729 lbs. A copy of each load v. deflection plot is attached.

LABORATORY CERTIFICATE



Lab No. 5004.8056

This testing was completed on October 15, 2012 and was performed in accordance with the customer's authorization.

Submitted by:

Edward A. Foreman
Edward A. Foreman
Quality Manager

yv

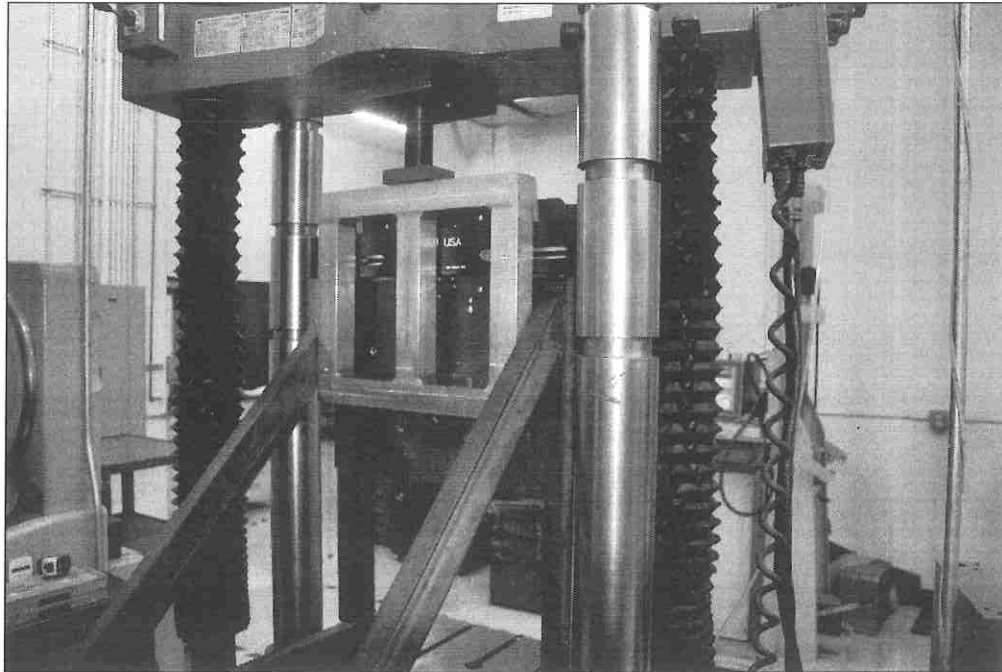


Figure 1: Set-up for the 24'' wall mount

Lab No. 5004.8056

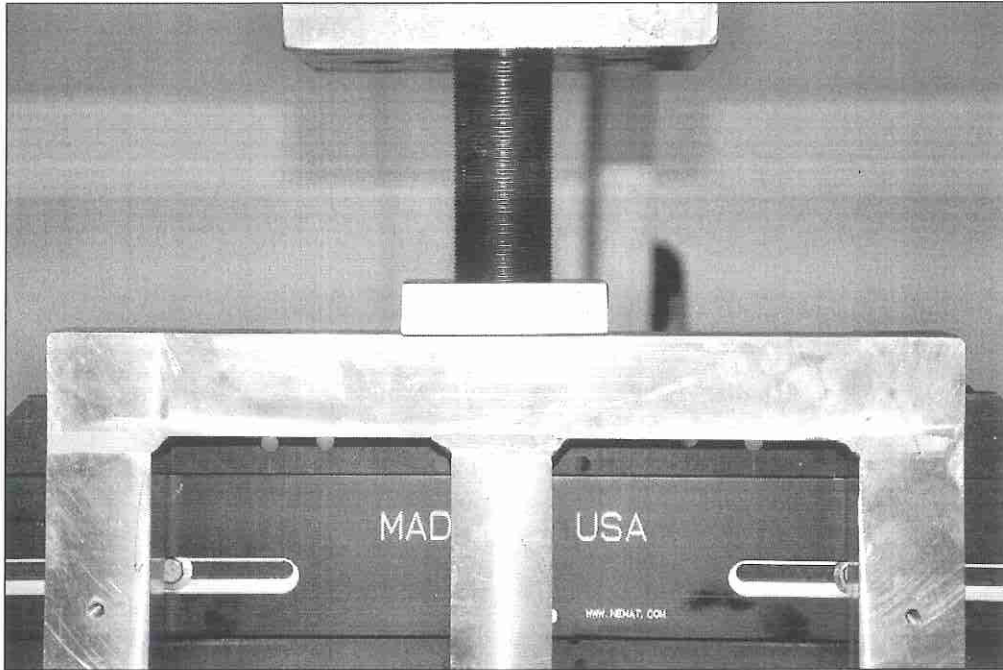


Figure 2: Set-up for the 24" wall mount

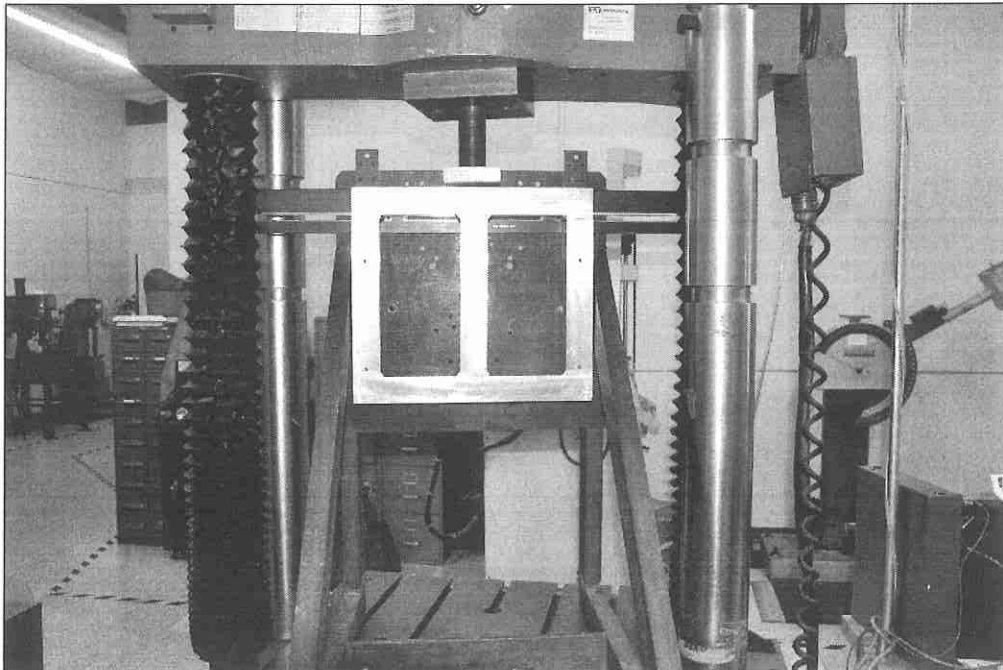


Figure 3: Set-up for the 36" wall mount

Lab No. 5004.8056

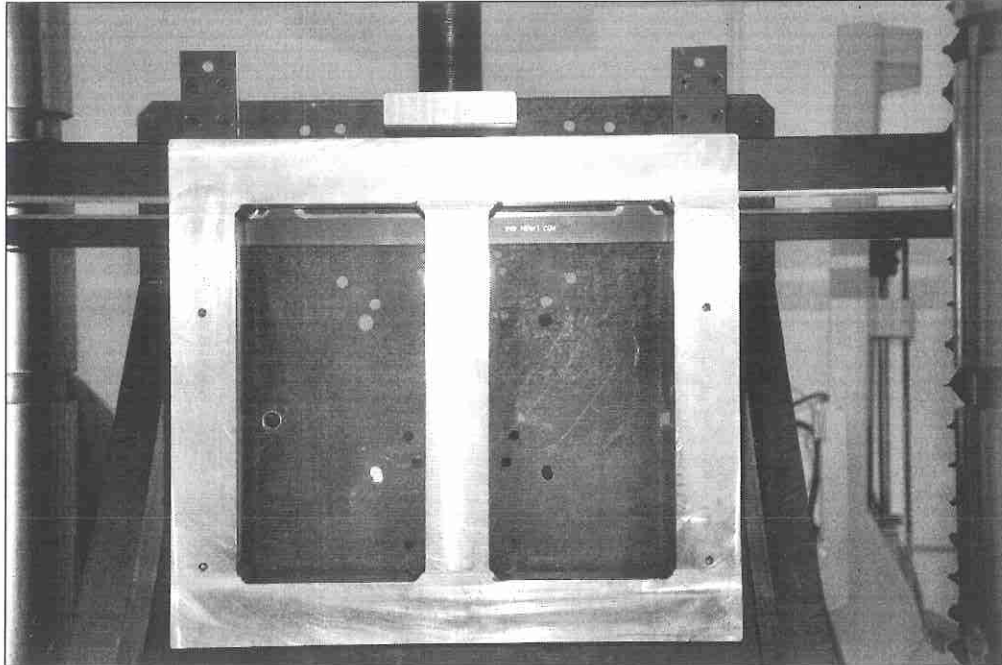


Figure 4: Set-up for the 36" wall mount

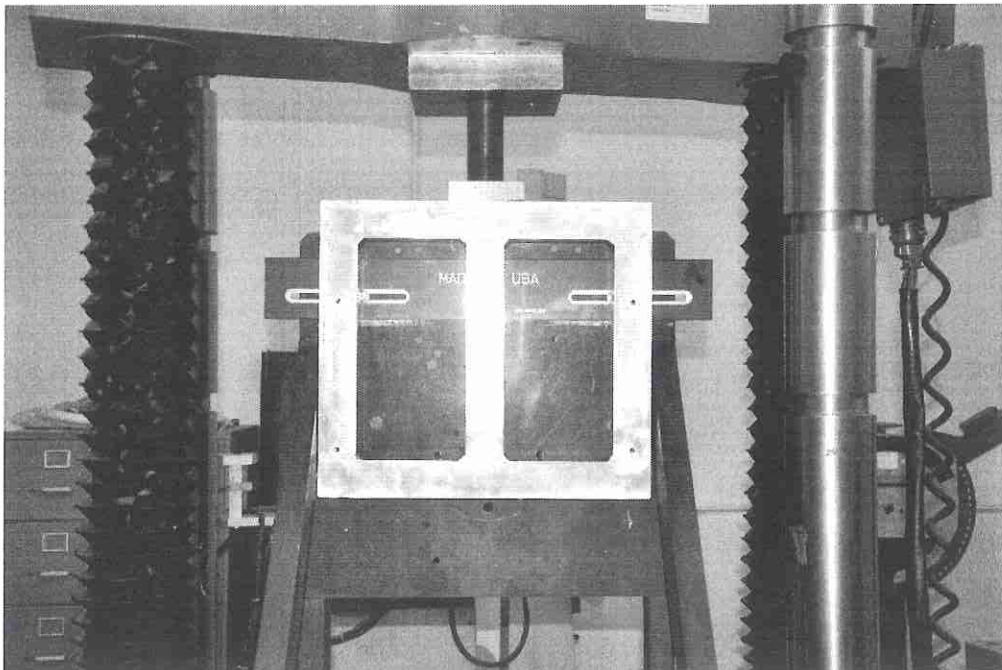


Figure 5: Test in progress for the 24" wall mount

Lab No. 5004.8056

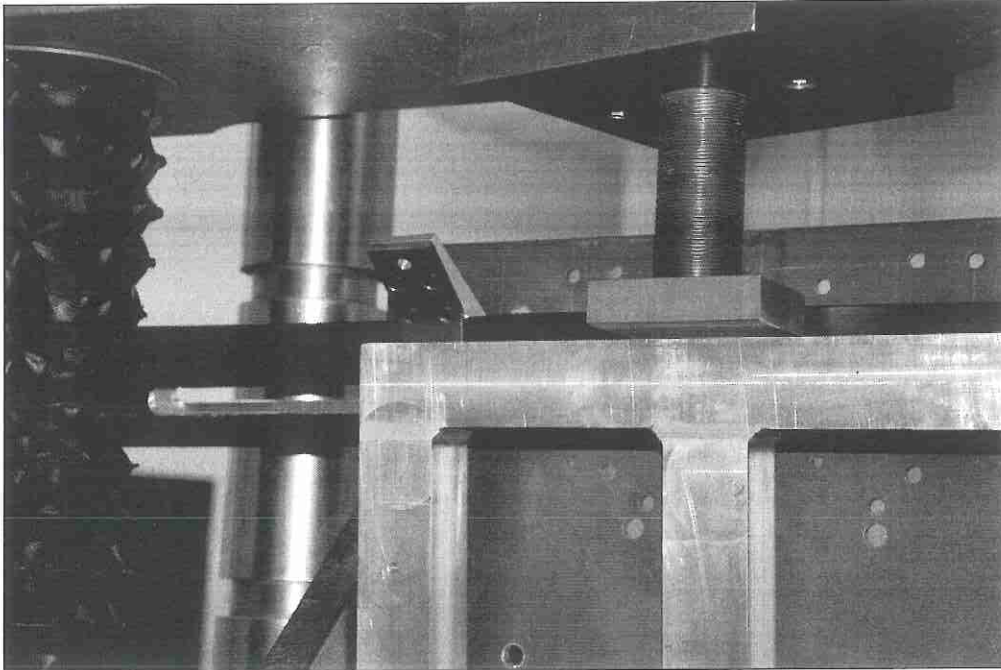


Figure 6: Test in progress for the 36" wall mount

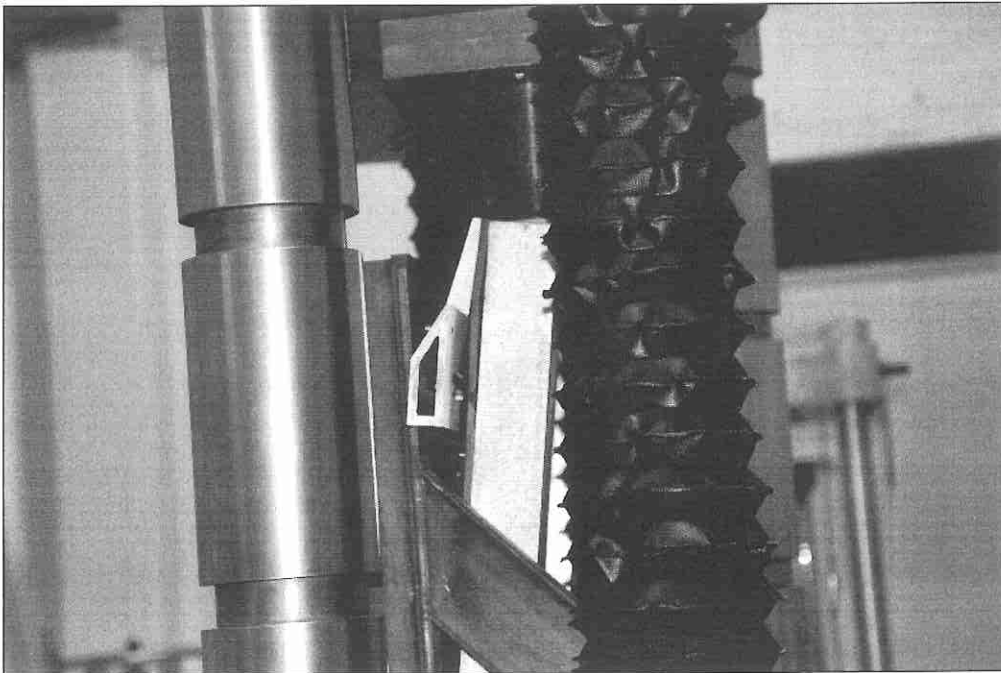


Figure 7: Test in progress, Side View, for the 36" wall mount

Lab No. 5004.8056

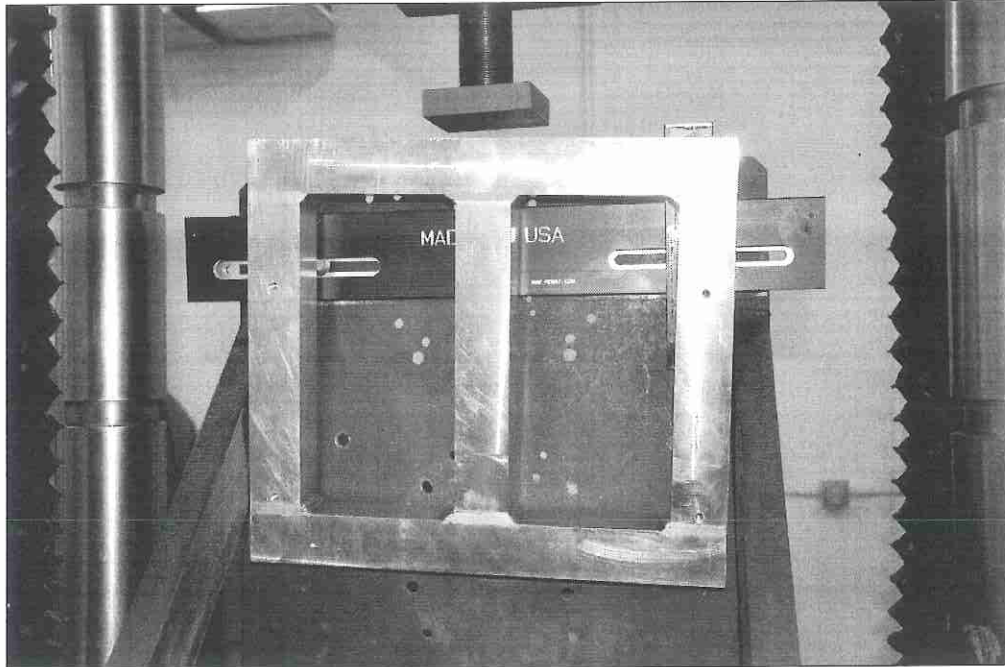


Figure 8: Failure mode for the 24" wall mount

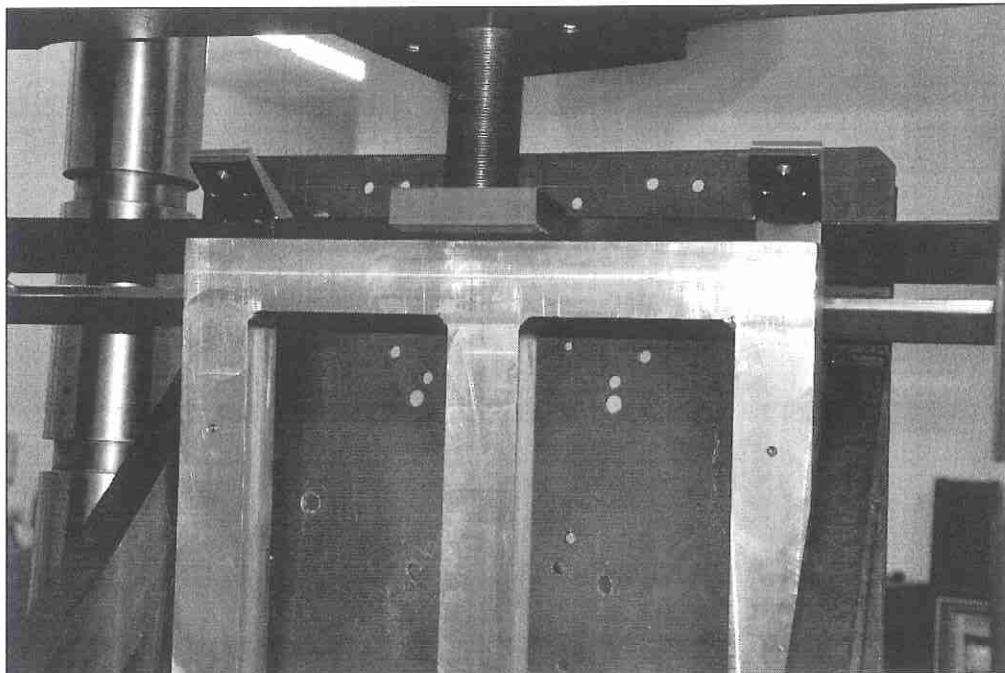


Figure 9: Failure mode for the 36" wall mount